

INFO@ALUMARCH.COM

888 589 9771

KNOTWOOD CLADDING SYSTEM

Description

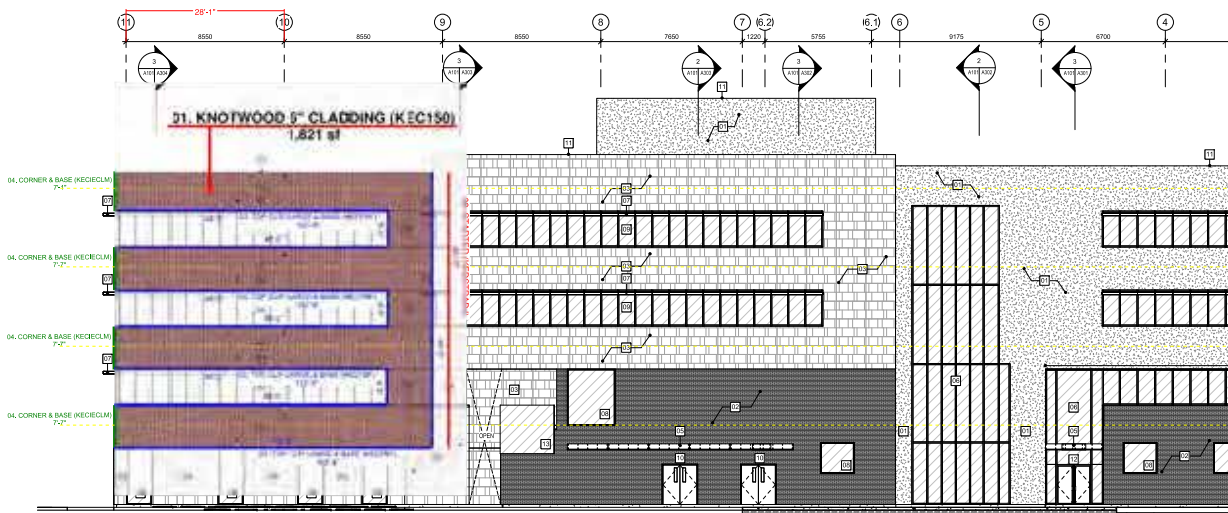
- 01. KNOTWOOD 6" CLADDING (KEC150)
- 02. STARTER (KEDSTRADJ)
- 03. TOP CLIP LARGE & BASE (KECFBF)
- 04. CORNER & BASE (KECIECLM)

PLEASE NOTE THAT:

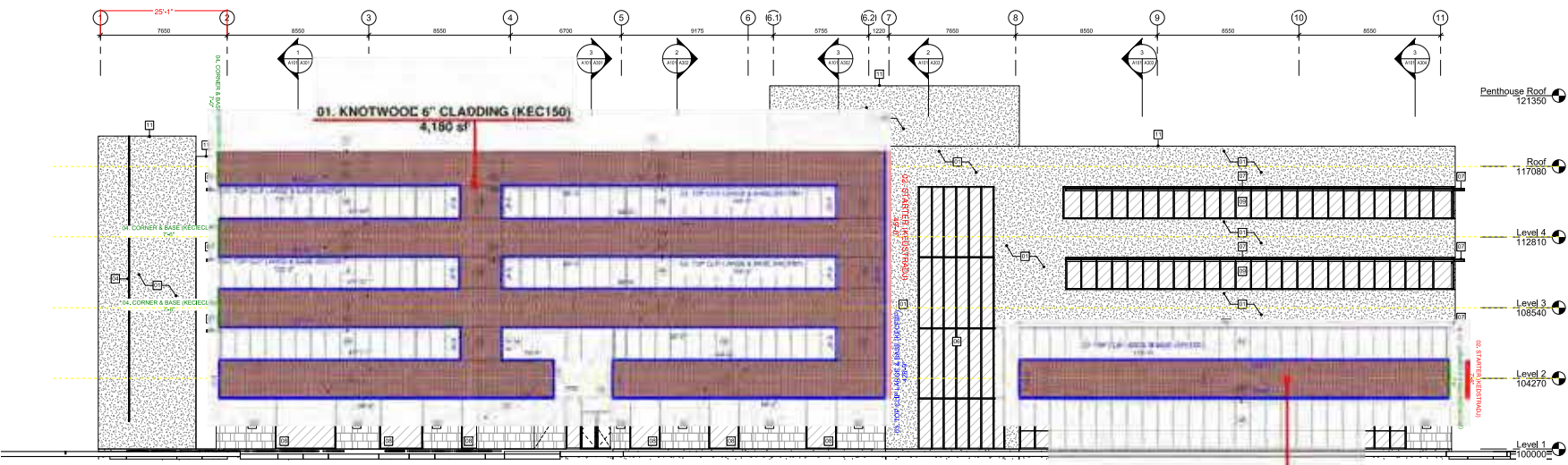
- THIS TAKEOFF AND QUANTITIES CALCULATED ARE A COMPLIMENTARY SERVICE FROM ALUMARCH. IT'S THE SOLE RESPONSIBILITY OF THE PURCHASER TO ENSURE QUANTITIES ARE CORRECT.

- THIS TAKEOFF HAS BEEN CALCULATED ON A SQUARE FOOTAGE BASIS. IN SOME AREAS, BUTT JOINTS MAY BE REQUIRED.

KEYNOTES - EXTERIOR ELEVATIONS (BUILDING)



1 Building North Elevation



2 Building South Elevations

DRAWING TITLE
Exterior Elevations - Building



Corner already counted

Corner already counted

Corner already counted

Corner already counted

Corner already counted

PLEASE NOTE THAT:
 - THIS TAKEOFF AND QUANTITIES CALCULATED ARE A COMPLIMENTARY SERVICE FROM ALUMARCH. IT'S THE SOLE RESPONSIBILITY OF THE PURCHASER TO ENSURE QUANTITIES ARE CORRECT.
 - THIS TAKEOFF HAS BEEN CALCULATED ON A SQUARE FOOTAGE BASIS. IN SOME AREAS, BUTT JOINTS MAY BE REQUIRED.

INFO@ALUMARCH.COM

888 589 9771

KNOTWOOD CLADDING SYSTEM

Description	Quantity	Unit
01. KNOTWOOD 6" CLADDING (KEC150)	9,102	sf
02. STARTER (KEDSTRADJ)	194.45	ft
03. TOP CLIP LARGE & BASE (KECFBF)	2,089.09	ft
04. CORNER & BASE (KECIECLM)	59.58	ft
TOTAL FOR ALL CLADDING SYSTEM		

01. KNOTWOOD 6" CLADDING (KEC150)
 9,102sqft + 3% = 9,375sqft, 9.25ft per piece = 1,014 pieces

02. STARTER (KEDSTRADJ)
 194ft + 10% = 213ft, 18.5ft per piece = 12 pieces

03. TOP CLIP LARGE & BASE (KECFBF)
 2,089ft + 5% = 2,193ft, 18.5ft per piece = 119 pieces

04. CORNER & BASE (KECIECLM)
 59ft + 10% = 64ft, 18.5 ft per piece = 04 pieces

05. CLADDING CLIP (KAOCC45)
 9,102sqft = 92 pieces (Bag of 100)

BILL OF MATERIALS: KNOTWOOD CLADDING INTERLOCKING SYSTEM

DESCRIPTION	PROFILES	QUANTITY
6" CLADDING (KEC150) 6" x 58 1/2" x 1/2" 1100mm x 1486mm x 12mm		1,014 PIECES
STARTER (KEDSTRADJ) 1 3/8" x 1/2" x 1 1/2" 42mm x 13mm x 38mm		12 PIECES
TOP CLIP BASE (KECFBF) 2 5/8" x 1/2" x 1 1/2" 70mm x 13mm x 38mm		119 PIECES
TOP CLIP LARGE (KECFBF) 2 5/8" x 1/2" x 1 1/2" 70mm x 13mm x 38mm		119 PIECES
MALE CORNER (KECIECLM) 1 5/8" x 1/2" x 1 1/2" 42mm x 13mm x 38mm		04 PIECES
FEMALE CORNER (KECIECLM) 1 5/8" x 1/2" x 1 1/2" 42mm x 13mm x 38mm		04 PIECES
CLADDING CLIP (KAOCC45) 1 1/2" x 1/2" 38mm x 13mm		92 PIECES