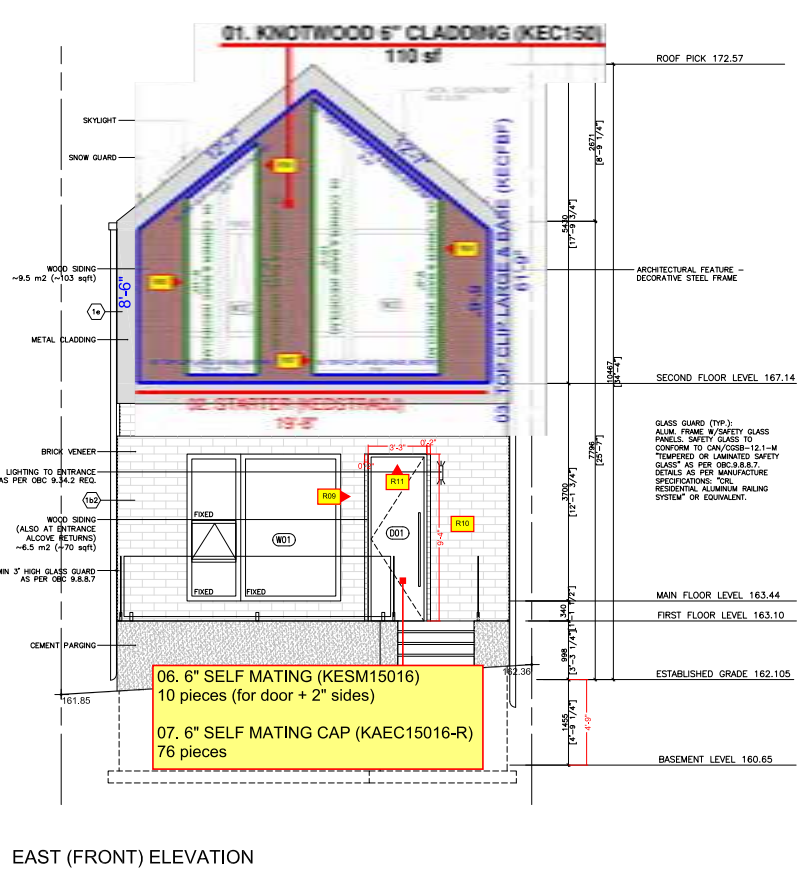
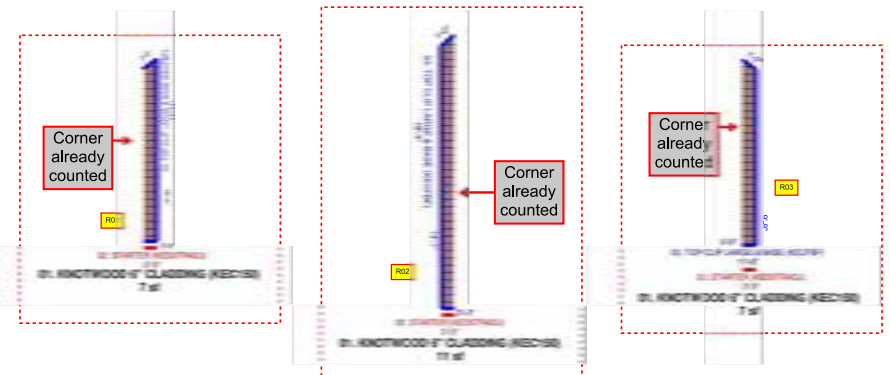


- KNOTWOOD CLADDING SYSTEM**
Description
- 01. KNOTWOOD 6" CLADDING (KEC150)
 - 02. STARTER (KEDSTRADJ)
 - 03. TOP CLIP LARGE & BASE (KECFBF)
 - 04. CORNER & BASE (KECIECLM)

PLEASE NOTE THAT THIS TAKEOFF AND QUANTITIES CALCULATED ARE A COMPLIMENTARY SERVICE FROM ALUMARCH. IT'S THE SOLE RESPONSIBILITY OF THE PURCHASER TO ENSURE QUANTITIES ARE CORRECT.

PLEASE NOTE THAT THIS TAKEOFF HAS BEEN CALCULATED ON A SQUARE FOOTAGE BASIS. IN SOME AREAS, BUTT JOINTS MAY BE REQUIRED.



INFO@ALUMARCH.COM
888 589 9771

KNOTWOOD CLADDING SYSTEM

Description	Quantity	Unit
01. KNOTWOOD 6" CLADDING (KEC150)	379	sf
02. STARTER (KEDSTRADJ)	53.67	ft
03. TOP CLIP LARGE & BASE (KECFBF)	325.01	ft
04. CORNER & BASE (KECIECLM)	98.71	ft
TOTAL FOR ALL CLADDING SYSTEM		

OPTION 01. INTERLOCKING SIDING

- 01. KNOTWOOD 6" CLADDING (KEC150)**
379sqft + 10% = 416sqft, 9.25ft per piece = 46 pieces
- 02. STARTER (KEDSTRADJ)**
53ft + 10% = 58ft, 18.5ft per piece = 04 pieces
- 03. TOP CLIP LARGE & BASE (KECFBF)**
325ft + 10% = 357ft, 18.5ft per piece = 20 pieces
- 04. CORNER & BASE (KECIECLM)**
98ft + 10% = 107ft, 18.5 ft per piece = 06 pieces
- 05. CLADDING CLIP (KAOCC45)**
379sqft = 04 pieces (Bag of 100)
- 06. 6" SELF MATING (KESM15016)**
10 pieces
- 07. 6" SELF MATING CAP (KAEC15016-R)**
76 pieces

PLEASE NOTE THAT THIS TAKEOFF AND QUANTITIES CALCULATED ARE A COMPLIMENTARY SERVICE FROM ALUMARCH. IT'S THE SOLE RESPONSIBILITY OF THE PURCHASER TO ENSURE QUANTITIES ARE CORRECT.

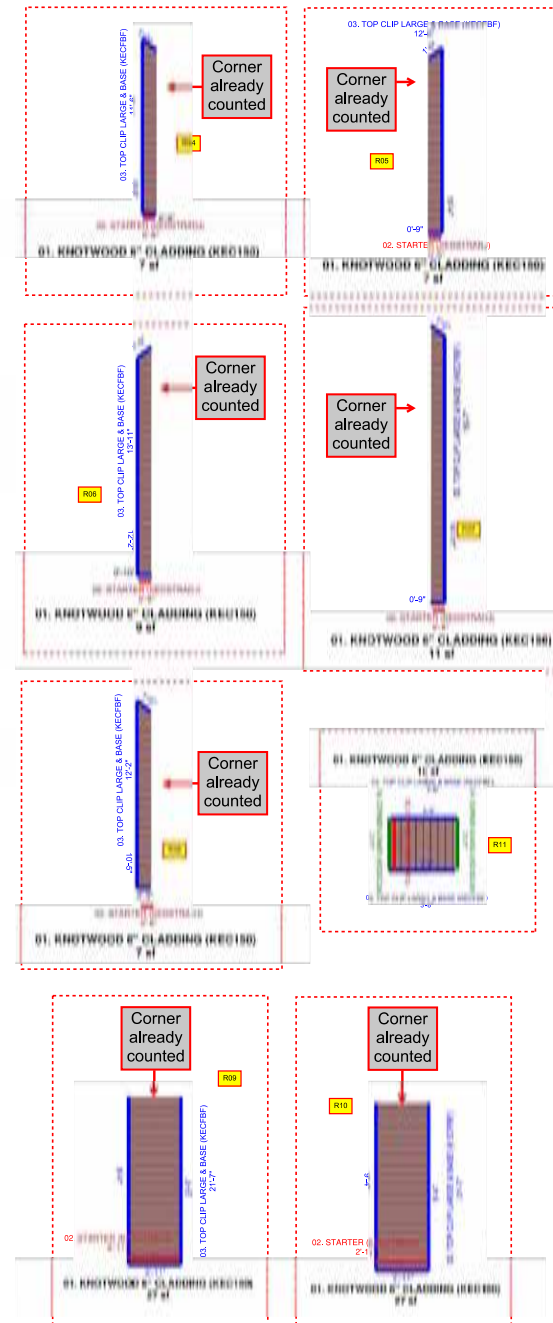
**KNOTWOOD BILL OF MATERIALS:
OPTION 01: INTERLOCKING SIDING SYSTEM**

DESCRIPTION	PROFILES	QUANTITY
6" CLADDING (KEC150) 6" x 5/8" x 18/16" 150mm x 16mm x 5650mm		46 PIECES
STARTER (KEDSTRADJ) 1 5/8" x 5/8" x 18/16" 42mm x 16mm x 5650mm		04 PIECES
TOP CLIP BASE (KECFBF) 2 3/4" x 5/8" x 18/16" 70mm x 16mm x 5650mm		20 PIECES
TOP CLIP LARGE (KECFITLM) 2 9/16" x 5/8" x 13/16" 65mm x 16mm x 5650mm		20 PIECES
MALE CORNER (KECIECLM) 1 1/8" x 5/8" x 18/16" 29mm x 16mm x 5650mm		06 PIECES
FEMALE CORNER (KECIECF) 2 3/4" x 5/8" x 18/16" 70mm x 16mm x 5650mm		06 PIECES
CLADDING CLIP (KAOCC45) 1 1/2" x 5/8" 38mm x 16mm		04 PIECES
NOT INCLUDED	#10-12 1/2" Self Drilling Screw Galvanized, Stainless Steel or Epoxy Coated Non corrosive #10-12 1/2" Screw Galvanized, Stainless Steel or Epoxy Coated Non corrosive	
6" SELF MATING (KESM15016) 6" x 5/8" x 18/16" 150mm x 16mm x 5650mm		10 PIECES
6" SELF M. CAP (KAEC15016-R) 6" x 5/8" 150mm x 16mm		76 PIECES

PLEASE NOTE THAT THIS TAKEOFF HAS BEEN CALCULATED ON A SQUARE FOOTAGE BASIS. IN SOME AREAS, BUTT JOINTS MAY BE REQUIRED.

**KNOTWOOD BILL OF MATERIALS:
OPTION 02: ONLY SELF MATING SYSTEM**

DESCRIPTION	PROFILES	QUANTITY
6" SELF MATING (KESM15016) 6" x 5/8" x 18/16" 150mm x 16mm x 5650mm		102 PIECES
6" SELF M. CAP (KAEC15016-R) 6" x 5/8" 150mm x 16mm		371 PIECES



ALUMARCH.COM
KNOTWOOD TAKEOFF

Note:
LEGEND

 EXISTING TO REMAIN
 NEW BRICK FACE
 DEMOLISHED

Drawing Title:
BASEMENT AND GROUND FLOOR PLAN

Drawing No.:
A2.01

Scale: 1:100